

THE
WORKSURFACE
COLLECTION



YOUR BOOK OF
INSPIRATION

03



WHITE

- 05 Pure
- 09 Feature Veins
- 15 Abstract Veins
- 21 Dappled
- 27 Reflections

31



NEUTRAL

- 33 Dappled & Crystallised

39



GREY

- 43 Pure & Crystallised
- 45 Veined
- 49 Dappled
- 51 Abstract Veins



53

BLACK

- 57 Abstract Veins
- 59 Feature Veins
- 61 Pure
- 62 Dappled & Crystallised



63

TIMBER

- 63 Timber



69

YOUR WORKSURFACE

- 71 Material Characteristics
- 73 The Finer Details
- 75 Material Finish and Technology
- 77 Specialists from start to finish



A GROUNDING PRESENCE - IN ANY AND EVERY ROOM...

Whether you're decorating a kitchen or designing a bedroom, your choice of worksurface will play a huge part in determining your room's character.

Imagine that Californian sleek, chic, all white everything kitchen that you can finally call your own. But how about if it had a crystal-filled worktop that flowed into and also formed the sink itself? Picture an oak vanity, ready to serve as the dressing area you've always wanted. Now picture it with a layer of

sublime Strata Imperial atop. Consider it transformed. That's the thing about worksurfaces; they're about form as much as they are about function.

In the next 80 pages, our aim is to help you find 'the one'. Together we'll look at more than 100 options, considering each of their key character traits and how they best marry with your own. A busy, family kitchen filled with budding bakers and messy cooks for example, is likely to ask for a worksurface

that's robust and ready to roll with whatever is thrown its way.

Organised by palette rather than material, our collection introduces you to worksurfaces tone by tone. Because, just like your walls and floor, a worksurface is another way to introduce colour and pattern into your living space. Yet another of their underrated qualities...

SEE AN ICON AND NEED A RECAP OF WHAT IT STANDS FOR?
JUST FLIP TO OUR BACK PAGE FOR A BREAKDOWN AND USE IT
AS YOUR BOOKMARK TO MAKE BROWSING EASY.

Note that all of the images you'll see in our bespoke collection are a representation of the real thing. You can expect variations in tone, texture and pattern but that's all part of your worksurface's individuality.



WHITE

COLLECTION

Pure and simple

One of the most versatile, room-brightening, mood-balancing tones to invite into your home; welcome to the White Collection. A crisp, clean white worksurface is as pleasing as putting on a freshly ironed white shirt - everything instantly looks and feels smarter and sharper. And perhaps the best bit, your worksurface, whether our modern Brilliant White finish or one of our creamy country cottage whites, is one of the most practical places to bring a white accent into your decor.



WHITE
PURE



A BLANK & BEAUTIFUL CANVAS

There's no such thing as one shade of white. Just picture a blanket of fresh white, bright snow and compare that to softer oat tones found in the pantry – rice white and flour white to name just two. Our pure white palette is an edit of our white worksurfaces that are our smoothest colours – in texture and in consistency of tone. Each pairs with chrome accents as well as unlacquered brass or matt black, and will complement a pared-down scheme as much as one that's colourful. Because white, after all, goes with anything and everything.

TOP LEFT:

Brilliant White worksurface

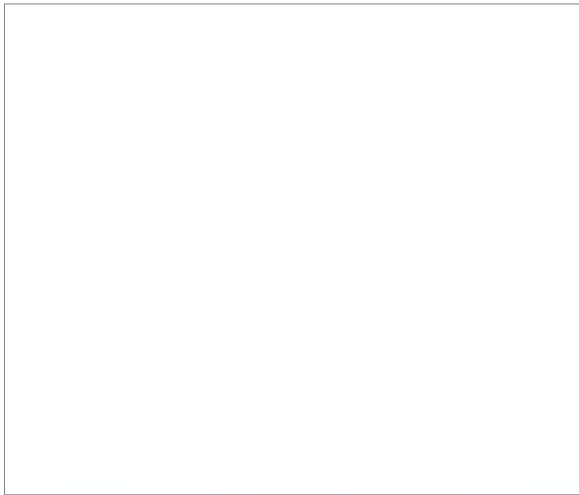
TOP RIGHT:

Standard square chamfer profile

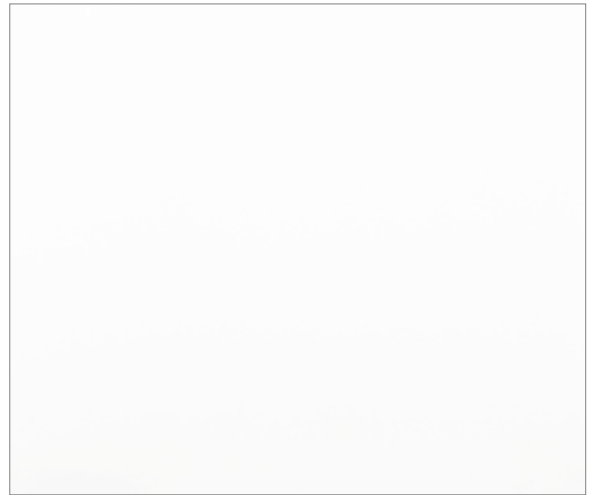
BOTTOM:

Single bowl undermount sink

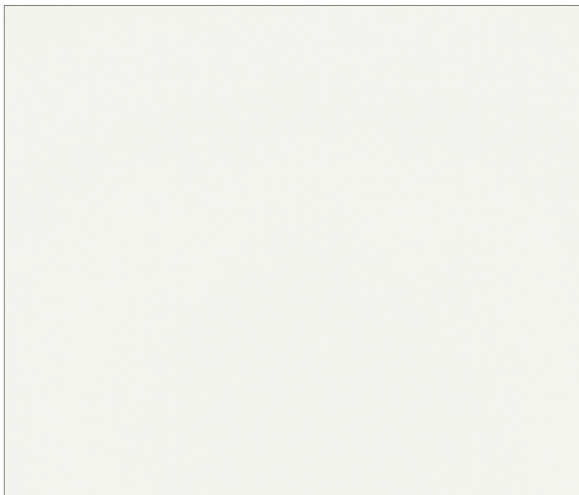
WHITE PURE



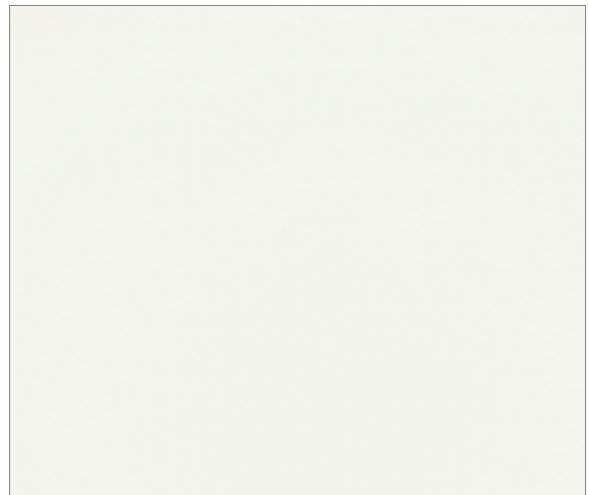
Brilliant White



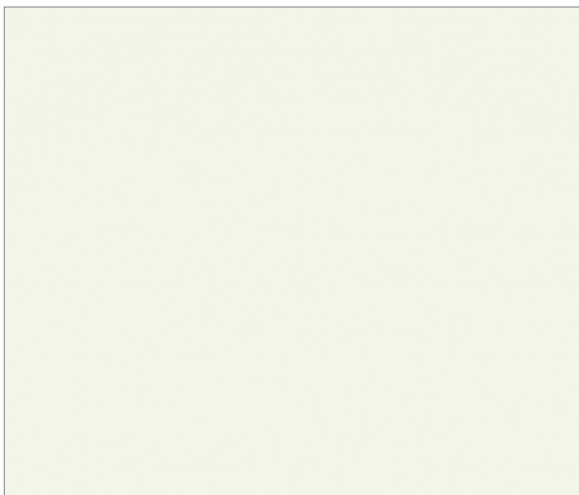
Snowfall



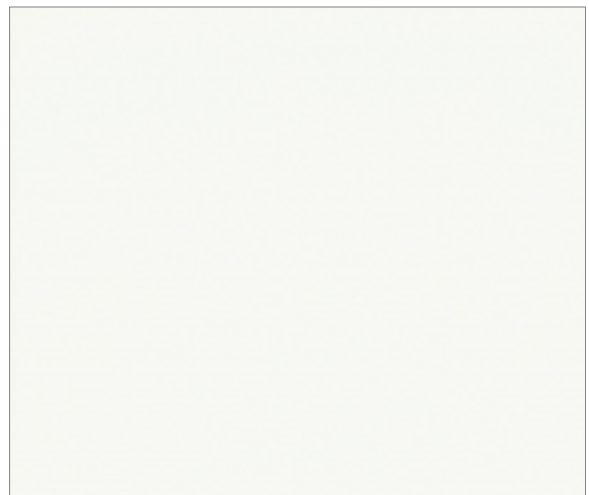
Halo



Zenith



Moone



Uyuni



ULTRA COMPACT



QUARTZ



GRANITE

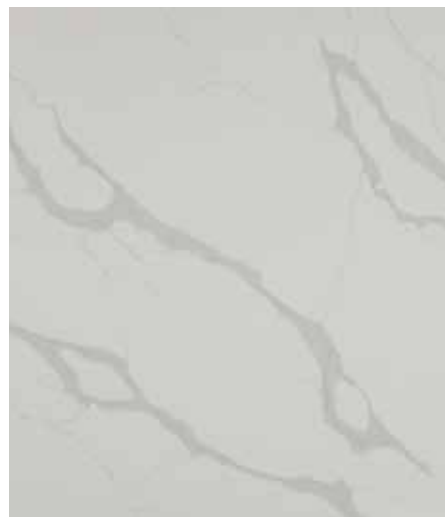


FLIP TO OUR BACK PAGE FOR OUR ICON QUICK GUIDE



WHITE
FEATURE
VEINS





FOR A DOSE OF DRAMA

Think of a white worksurface and a marble's aesthetic is surely one of the first images that comes to mind. And with that comes its signature veining. Some grey and fine-lined, others golden and freeflowing, whichever representation of marbling you gravitate towards will add instant luxury and endless elegance to your living space.

Top Left:

Back splash and upstand behind integrated hob

Top right:

Strata Calacatta Silver - Strata Quartz detail image

Bottom:

Dresser with Strata Calacatta Silver - Strata Quartz, standard square edge



WHITE FEATURE VEINS



Entzo



Natura



Eternal Calacatta Gold



Bergan



Strata Calacatta Silver



Strata Imperial



ULTRA COMPACT

QUARTZ

GRANITE

FLIP TO OUR BACK PAGE FOR OUR ICON QUICK GUIDE

WHITE FEATURE VEINS



Aura



Calacatta Gold



Opera



Tundra



Strata Statuario



ULTRA COMPACT

QUARTZ

GRANITE

FLIP TO OUR BACK PAGE FOR OUR ICON QUICK GUIDE



132

Poems of John Keats

Enough when sat to let his soul's passions,
And all night kept awake, the slumbers, and to groan
That ancient, Beethoven heard the poet
From Italy to and so, "Now, at the
The silver, shining, trumpet, and
The boy's character, ready with
Wrote down to poems, and with
The crystal angels, ever a distance
With late music, ever three fourths
And the last, and wags the

All length hours in the great
With plain, and
Someone
Of the
And the
And the
As the last, and wags the

They told her how, and
Young man, and
Great the
If the
An
And
On

The Eve of St. Agnes

led to the floor, saw many a sweeping train
The bride's handkerchief, at last, to the
Of her friend, not cooked by high cuisine,
And the last, and wags the
And the last, and wags the
And the last, and wags the
And the last, and wags the

133



WHITE
ABSTRACT
VEINS



DYNAMIC AND DARING

Continuing with that marbled mindset, this next collection of worksurfaces is characterised by its free flowing, unpredictable markings. Some have subtler, mottled colouring if you don't want to go bold with pattern and palette, whereas others go big in every respect with dark ribbons rippling across their every inch...

TOP LEFT:

Standard square chamfer edge profile

TOP RIGHT:

Sink and upstand

BOTTOM:

Hob and backsplash



WHITE ABSTRACT VEINS



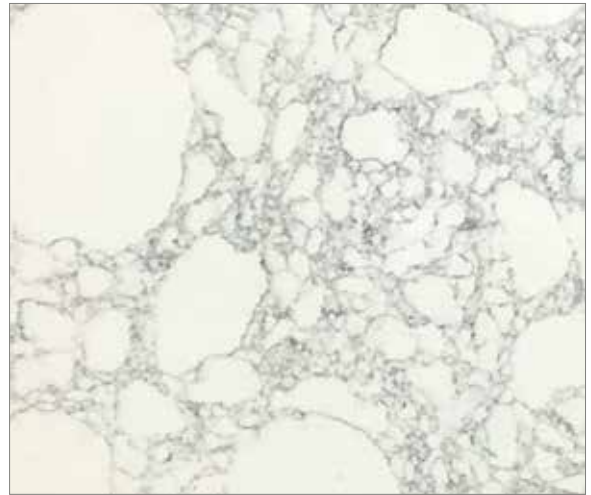
Kairos



Olimpo



Strata Absolute Marbled White



White Venato



Marbled White



Cararra Gioia



FLIP TO OUR BACK PAGE FOR OUR ICON QUICK GUIDE

WHITE ABSTRACT VEINS



Helena



Nilium



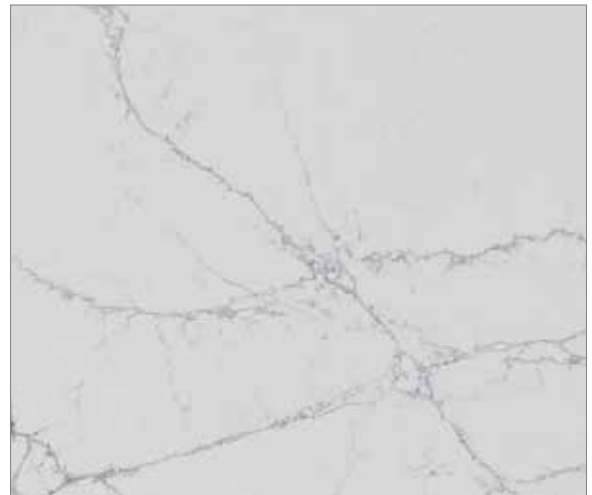
Arctic Storm



Portum



Pietra Cloud



Pietra Icy White



ULTRA COMPACT

QUARTZ

GRANITE



Ethereal Haze



Ethereal Dusk



Ethereal Glow



Ethereal Noctis



FLIP TO OUR BACK PAGE FOR OUR ICON QUICK GUIDE



WHITE
DAPPLED



THINK SPECKLES AND SWIRLS

If you're seeking a white with a hint of mottled colour or one that echoes dappled granite without the heavy grey character coming through too strong, then this selection of surfaces might call to you most. Or perhaps you're into the industrial look but have been waiting for a way to nod to the trend in a way that's more elegant than rugged? Well, a dappled concrete-inspired worksurface can do just that. They pair well with all of our other worktops too and so could be used in combination with one on your main run of cabinetry and the other on a kitchen island. A complementary contrast in waiting...

Top Left:
Worksurface and backsplash

Top Right:
Standard square chamfer edge profile

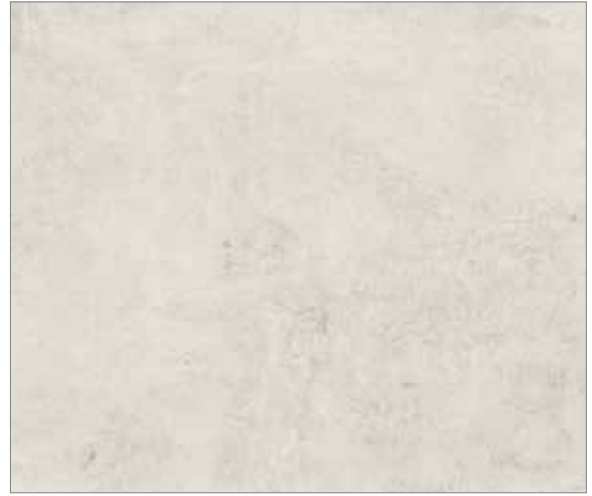
Bottom:
Single bowl undermount sink with standard drainer grooves



WHITE DAPPLED



Elegant Cream



Lunar



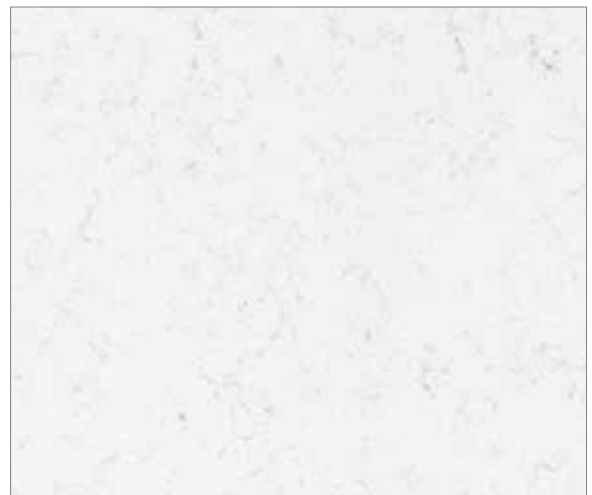
Yukon



Danae



Lagoon



Miami Vena



ULTRA COMPACT
QUARTZ
GRANITE

FLIP TO OUR BACK PAGE FOR OUR ICON QUICK GUIDE

WHITE DAPPLED



Sasea



Colonial White



Kemble Concrete



Bianco Sardo



Sinuous White Polished



ULTRA COMPACT



QUARTZ



GRANITE



FLIP TO OUR BACK PAGE FOR OUR ICON QUICK GUIDE



WHITE REFLECTIONS





LUXE, NOT LAVISH

White, in all its forms, will always result in a polished, high-end aesthetic, and that is never more true than with these reflective finishes. Each formed with fine crystals, you'll find your worksurface cleverly reflects any available light to help your room feel brighter and even more beautiful. Suiting Shaker cabinets as much as high-gloss ones, these surfaces are for homes that want to express their glamorous side, morning, noon and night.

TOP LEFT:

Standard square chamfer edge profile

TOP RIGHT:

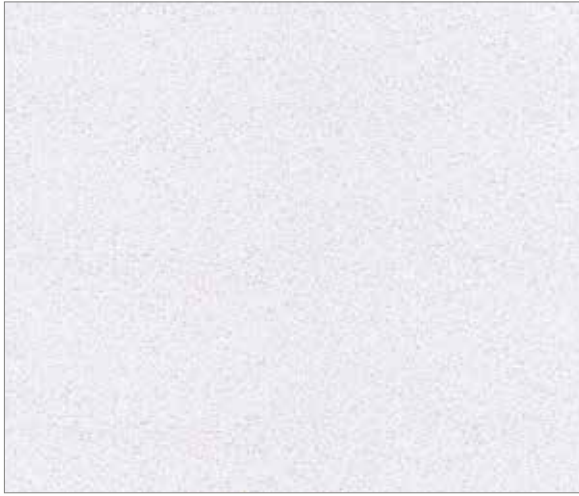
Quadrix 50 undermount sink from Alveus

BOTTOM:

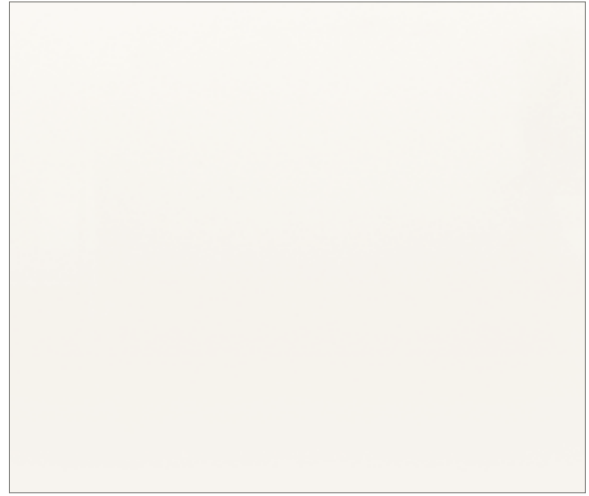
Quadrix 50 undermount sink from Alveus



WHITE REFLECTIONS



White Storm



Morning Frost



Blanco Norte



Blanco Maple



Quartz Mirror



ULTRA COMPACT



QUARTZ



GRANITE



FLIP TO OUR BACK PAGE FOR OUR ICON QUICK GUIDE



NEUTRAL

COLLECTION

Nature's canvas

A palette of sophisticated taupe, putty and biscuit-like beiges, these tactile surfaces are a reflection of nature's most grounding shades. Curated to mirror a selection of minerals and stones, from textured clay to ribboned marble, in situ they promise a warm, calming presence and make fine company for flagstones and timber floorboards.

NEUTRAL

DAPPLED &
CRYSTALLISED





FOR MUTED MOVEMENT

Some spaces suit a worksurface that's as neutral as they come; warm and balanced in tone, with nothing more than subtle crystallisation by way of markings that will form a room-balancing backdrop. Others benefit from a surface that's neutral and nutty in tone but rich in veining, to bring your room to life and give it its own handwriting that's unique to you and your home.

Top Left

Rosa Astratto - Strata Quartz

Top right

Square chamfer edge profile with dove tail drawers

Bottom

Rosa Astratto - Strata Quartz with Copper undermount sink with Oz tap from Alveus Monarch collection



NEUTRAL DAPPLED & CRYSTALLISED



Rosa Atrato



Arga



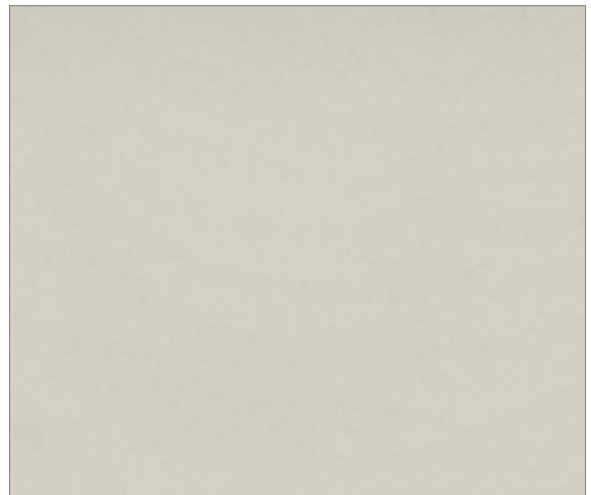
Taga



Pietra Taupe



Mayville Concrete



Faro White

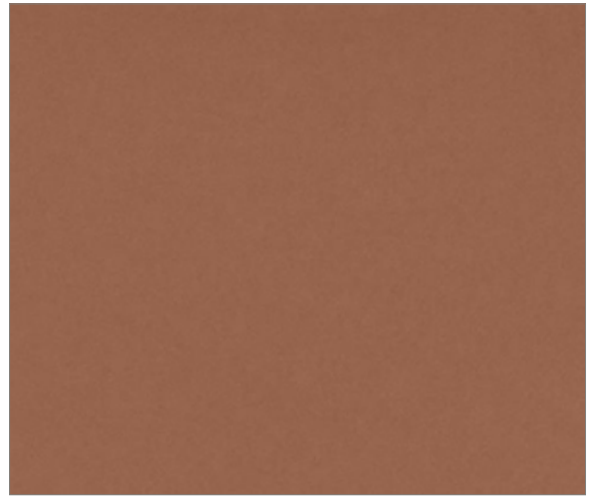


FLIP TO OUR BACK PAGE FOR OUR ICON QUICK GUIDE

NEUTRAL DAPPLED & CRYSTALLISED



Posidonia Green



Arcilla Red



Cala Blue



Phoenix Sand



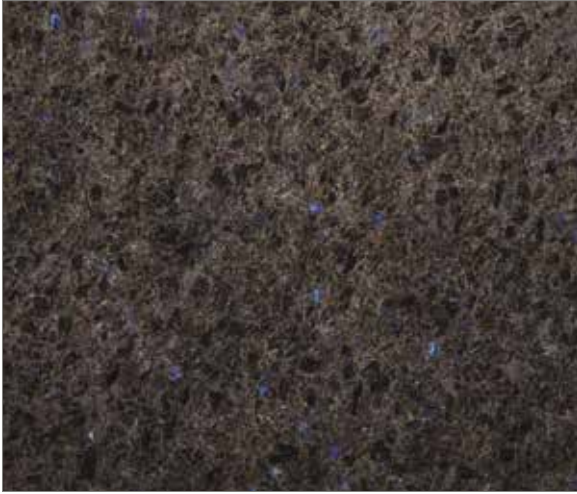
Elegant Clay



Ivory Fantasy



GRANITE
QUARTZ
ULTRA COMPACT



Lundhs Antique



Rippled Mink



Hail Storm



Keranium



Pietra Auburn



FLIP TO OUR BACK PAGE FOR OUR ICON QUICK GUIDE



GREY

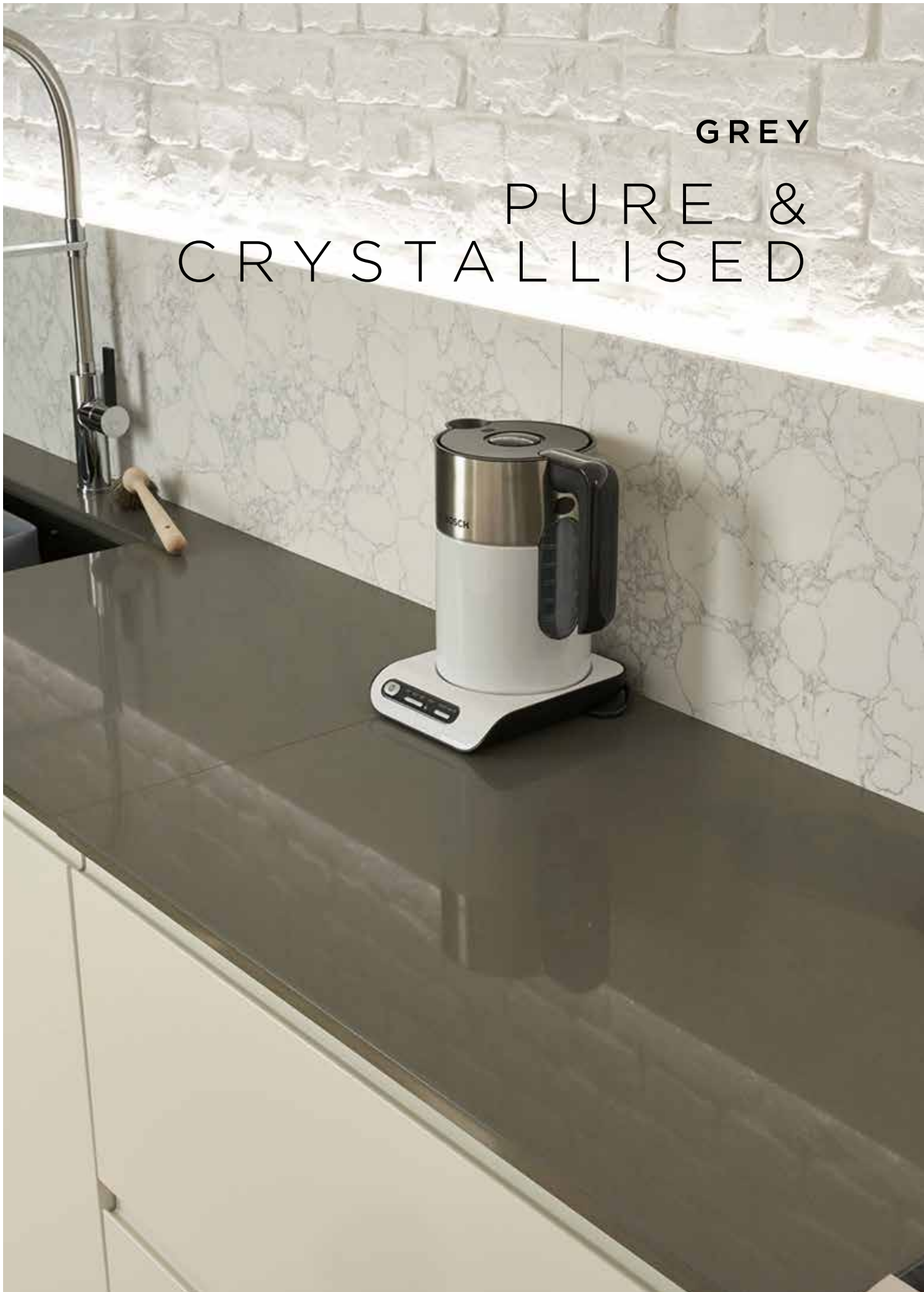
COLLECTION

For diluted drama

From the raw appeal of polished concrete to the dialled-down drama of marble veining of soft Barbican Concrete. This is a collection of worksurfaces for anybody seeking a happy middle ground when it comes to depth of tone. Grey worksurfaces, in their many guises, mould to any and every style of interior – modern industrial, heritage townhouse and the more Mid-Century inclined – with natural, dappled stones and imitation varieties depending on what best suits your pace of life.



GREY
PURE &
CRYSTALLISED





STEADY SOPHISTICATION

Some polished, others matte, some echoing crystal-formed granite, others smooth poured concrete, but all united in their representation of uninterrupted grey tone. These are worksurfaces for people seeking grey in its simplest, steadiest form to let other colours, patterns, materials and finishes come to the fore and make themselves known. Think of them as a stage for your room's greatest performers.

TOP LEFT:

Standard square chamfer edge profile

TOP RIGHT:

Sink and hob worksurface run

BOTTOM:

Ash Grey - Strata Quartz with Alveus Line Maxim inset stainless steel sink and Jenny tap

FLIP TO OUR BACK PAGE FOR OUR ICON QUICK GUIDE

GREY PURE AND CRYSTALLISED



Cinzel Grey



Moon Pearl



Gris Sylvestre



Kensho



ULTRA COMPACT



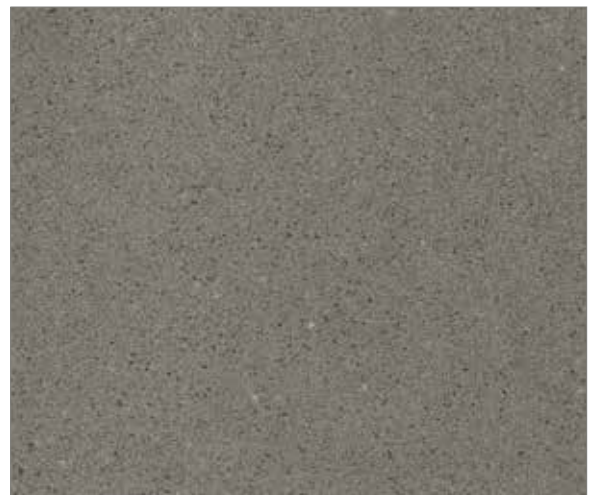
QUARTZ



GRANITE

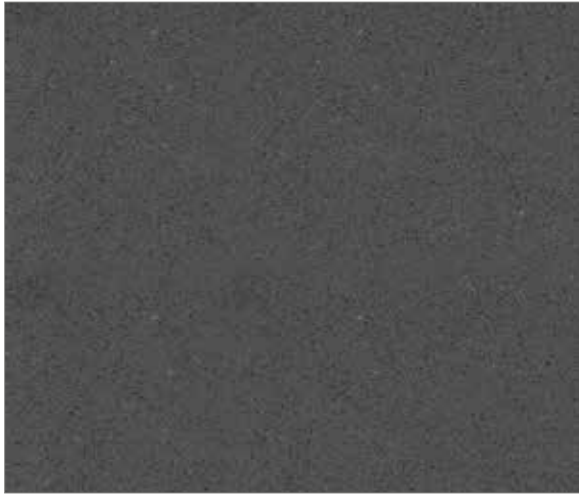


Gris Expo



Crystal Grey

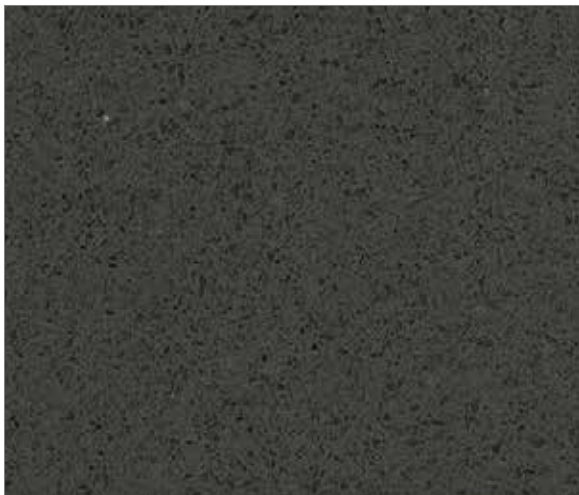




Marengo



Galema



Ash Grey



FLIP TO OUR BACK PAGE FOR OUR ICON QUICK GUIDE



GREY
VEINED
DAPPLED &
ABSTRACT VEINS



FOREVER ELEGANCE

One of grey's greatest beauties? The fact that it pairs with practically everything. Choose a worksurface with classic veining to elevate an already perfectly appointed kitchen, or bring in a mottled, modern material like any of our deeply robust Dekton countertops to shift the mood of your living space in an instant. Texture, movement and tone; grey worksurfaces play with all three...

Top Left:

Small upstand with Belfast sink

Top right:

Standard square chamfer edge profile

Bottom:

Nera Astratto - Strata Quartz worksurface with upstand



GREY VEINED



Nera Astratto



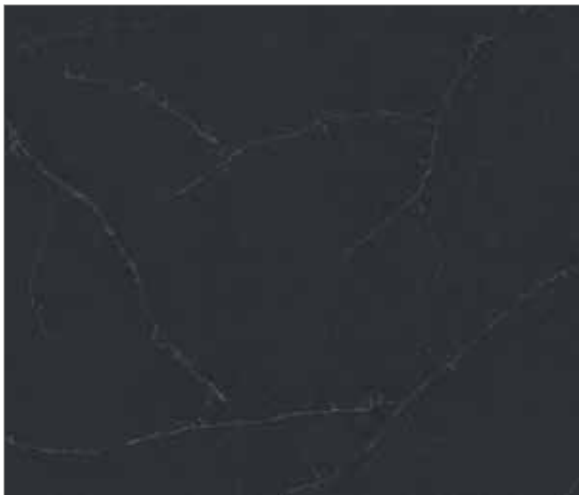
Desert Silver



Eternal Serena



Marbled Grey



Charcoal Soapstone

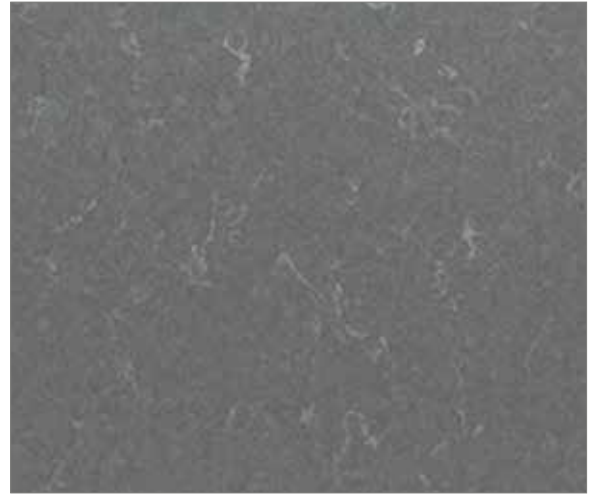


FLIP TO OUR BACK PAGE FOR OUR ICON QUICK GUIDE

GREY DAPPLED



Fossil



Balfron Concrete



Bromo



Laos



ULTRA COMPACT



QUARTZ



GRANITE



Orix



Trilium





Radium



Kreta



Soke



Trinity Concrete



Barbican Concrete



FLIP TO OUR BACK PAGE FOR OUR ICON QUICK GUIDE



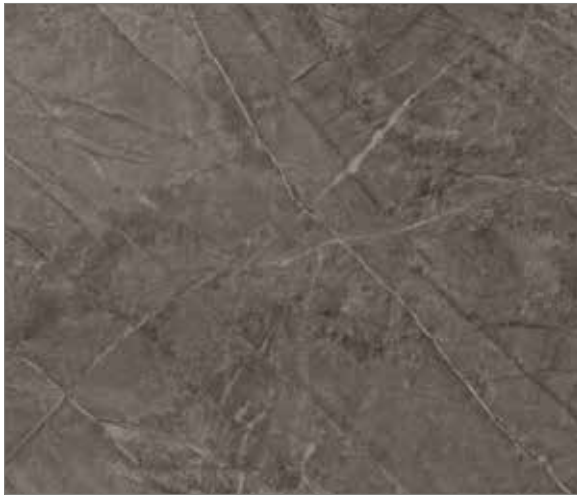
GREY ABSTRACT VEINS



Pietra Silver



Keon



Kira



Azul Aran



Silver Waves



Pietra Charcoal



FLIP TO OUR BACK PAGE FOR OUR ICON QUICK GUIDE



BLACK

COLLECTION

Noir is neutral

In the world of interiors, black calls for braveness, but it needn't. Consider clothing where black is a steadfast neutral, a go-to, a familiar friend, a failsafe, go-with anything option. The same is true with your worksurface. Black, whether veined, dappled or as smooth and sultry as the night sky, goes with all colour palettes and all materials. And it needn't be bold. Couple it with charcoal grey and slate flagstones and the contrast will be minimal. Place it atop an oak cabinet and accent it with matte black hardware and you'll have an elegant industrial aesthetic. Or, if you're drawn to drama, there's nothing more stirring than monochrome...



BLACK

ABSTRACT VEINS,
FEATURE VEINS,
PURE, DAPPLIED &
CRYSTALLISED



FOR DEPTH AND DRAMA

Our curation of black worksurfaces cover all manner of moods. There's pure and simple jet black whose uninterrupted tone, dramatic as it might seem, in fact creates an immense feeling of serenity. There are our veined options, some barely-there and others as stark as lightning bolts, that will inject confidence and energy into a living space, perfect for those who love nothing more than to host soirées. And there are those that mirror granite's speckled surface and will imbue your room with a sense of familiarity and ease, ideal for busy family homes.

TOP LEFT:

Worksurface corner detail

TOP RIGHT:

Strata Marquina - Strata Quartz detail image

BOTTOM:

Undermounted sink with small upstand



BLACK ABSTRACT VEINS



Ebony



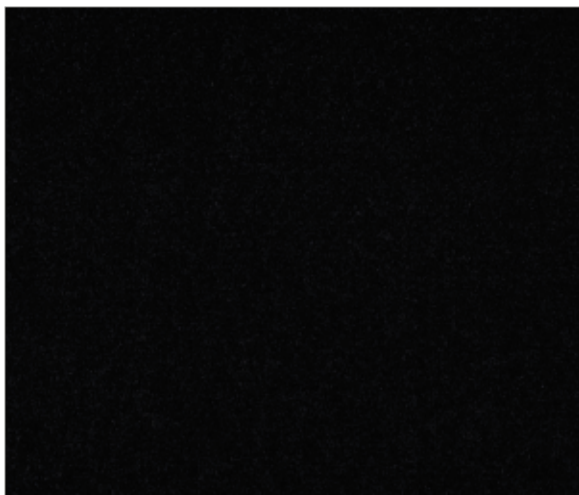
Kelya



Pietra Carbon



Strata Marquina



Black Linen



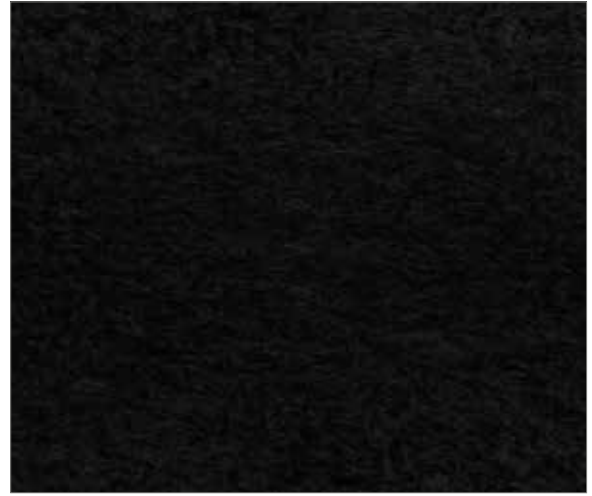
Pietra Verde



BLACK FEATURE VEINS



Black Beauty



Graphite Pearl



Black Cosmic



Orinoco

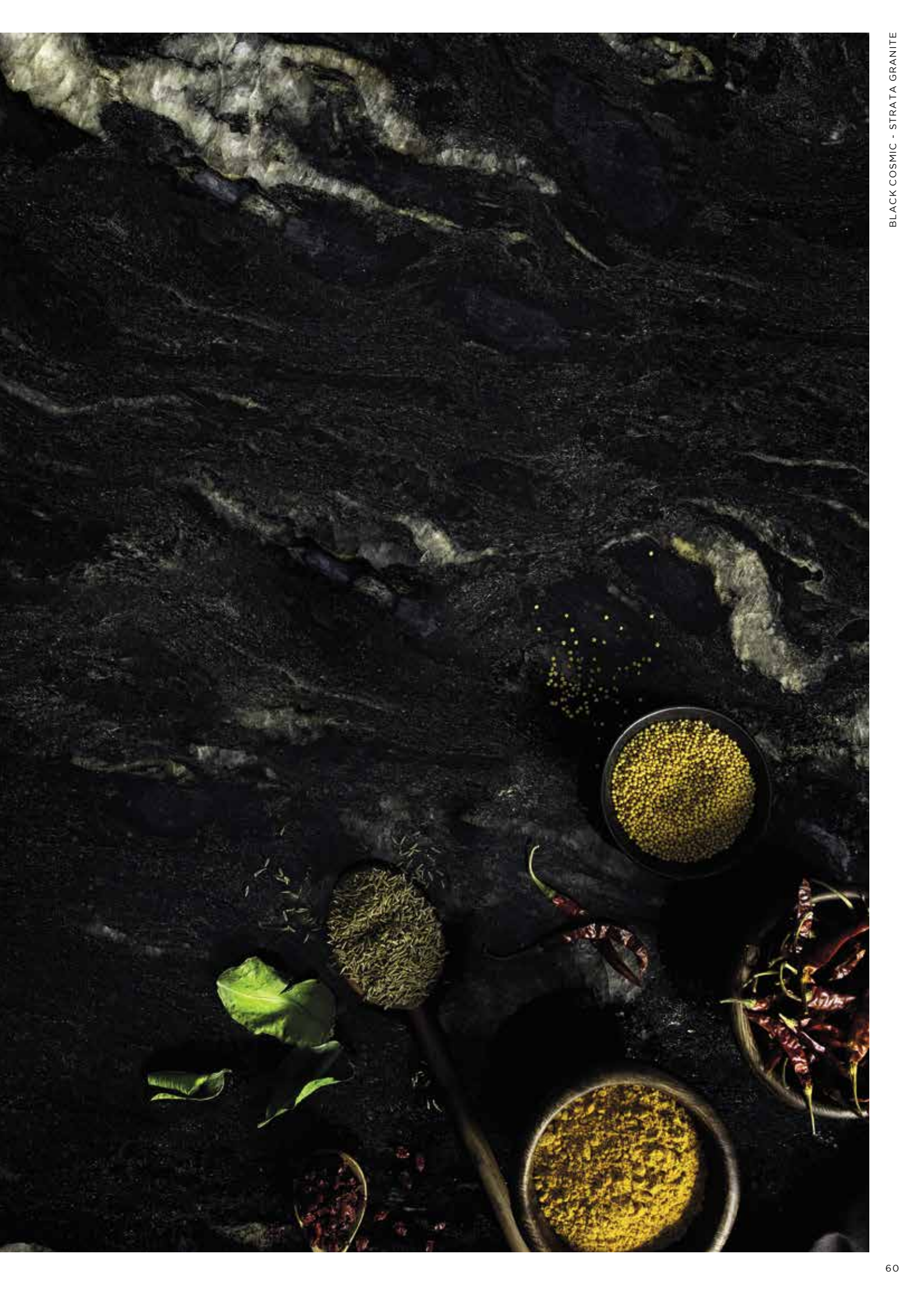


ULTRA COMPACT

QUARTZ

GRANITE

FLIP TO OUR BACK PAGE FOR OUR ICON QUICK GUIDE



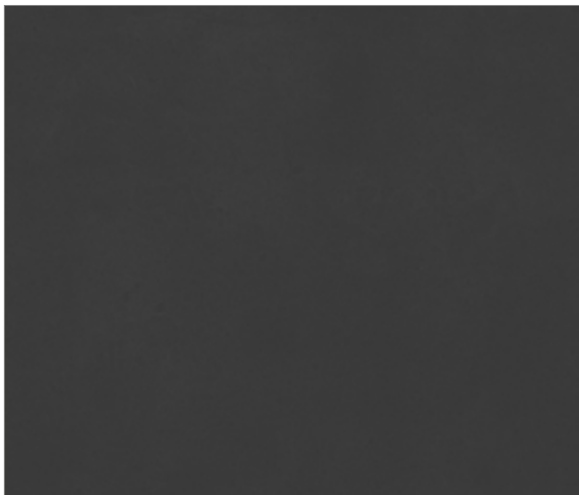
BLACK PURE



Sirius



Domoos



Eter Dekton



Premium Black



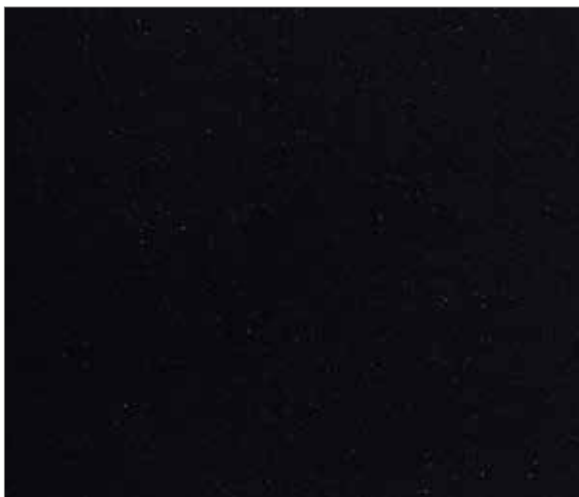
ULTRA COMPACT



QUARTZ



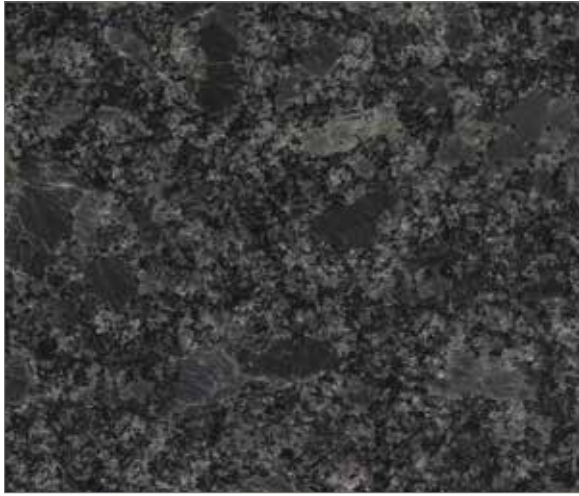
GRANITE



Night Tebas



BLACK DAPPLED & CRYSTALLISED



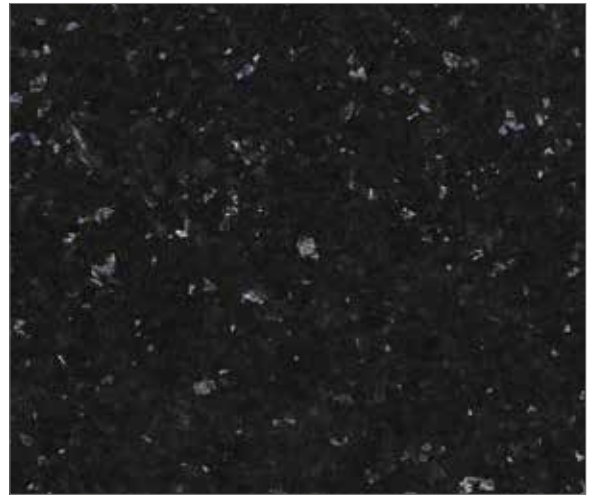
Steel Grey



Lundhs Blue



Indian Black Pearl



Lundhs Emerald



FLIP TO OUR BACK PAGE FOR OUR ICON QUICK GUIDE



TIMBER

COLLECTION

Natural and tactile

With a wooden worksurface, you'll feel its warmth as soon as your toes are over the threshold. And the moment that your hands glide over its surface, that same sentiment will wash over you, all over again. Wood is welcoming, it's familiar and it's totally timeless. It's a natural choice for quintessential country character, but a timber worksurface is just as welcoming in a contemporary setting, instantly relaxing and softening whatever the shade or grain.

TIMBER





GRAIN, KNOTS AND ALL

Smooth and steady oak, rich and varied walnut, statement-making walnut or impactful and intriguing end grain; welcome to our wooden worksurface edit. When choosing yours, consider if you want one to mirror other wooden features in your room, be it furniture or flooring, or if you'd like to invite in a new timber tone and texture. Ours are all formed from natural wood, celebrating each tree's individual grain, knots and swirls, so no two worksurfaces will ever be the same - one of their greatest character traits.

TOP:

Walnut - Strata Timber with drainer groove detail

BOTTOM:

End grain chopping board butting up to waterfall edge granite

TIMBER ENDGRAIN & NATURAL WOODGRAIN



Oak End Grain



Iroko



Rustic Oak



Prime oak



Strata Oak



Walnut





Oak



FLIP TO OUR BACK PAGE FOR OUR ICON QUICK GUIDE



The background is a light-colored surface with a subtle, organic marbled pattern in shades of grey and white. In the bottom left corner, there is a small, round, metallic bowl with a textured, slightly worn interior. In the bottom right corner, there is a wooden bowl, partially visible, containing a light-colored, granular substance. The overall aesthetic is clean, natural, and modern.

YOUR WORKSURFACE

Elements and style

Colour palette is just one element behind the worksurface that's right for you. Finding your perfect match means being confident you've chosen the best material for your lifestyle; considering its thickness and profiling; deciding on a sink style and whether to opt for drainer grooves; and picking a finish that appeals to you most. These are the nuances, the markers of personalisation and individuality to truly make a worksurface your own.

MATERIAL CHARACTERISTICS

Q QUARTZ

More consistent than granite and lower maintenance than marble, quartz is known for its durability, its resistance to chemicals and its ease to live with. It performs extremely well in busy kitchens thanks to its stain-resistance but comes in such an array of colours and finishes that it can appear delicate enough to even suit a bedroom's dressing area.



UC ULTRA COMPACT

There's something so tactile about this worksurface material that makes it incredibly satisfying to touch. But as soft and sophisticated as it is to look at, Ultra Compact is a material that's as tough as they come. Scratch and stain resistant, tolerant of high temperatures, and uniform in finish, it satisfies both function and form.



G GRANITE

Formed from natural rock, granite is one of the most renowned worksurface materials. Iconic for its dappled appearance, every cut of granite is unique, meaning no surface pattern is ever an exact replica. Immensely strong and durable, it's a failsafe option for those favouring natural stone.



QZ QUARTZITE

Though it may sound similar to quartz, quartzite is in fact a worksurface entirely derived from natural, metamorphic rock formed from pure quartz sandstone.



T TIMBER

Once the mainstay of the quintessential country kitchen, wooden worksurfaces are now well-come into city pads as much as those in the provinces. Natural and renewable with a look full of richness and warmth, ours come in a choice of two hardwoods - oak, walnut or iroko - and will only grow in character with use and time.



silestone

Silestone by Cosentino - Is the leading global hybrid surface, a formation of raw materials such as minerals and natural quartz. An environmental success story is the recent addition of the new Hybriq and Hybriq + technology, using 99% recycled water, 100% renewable electric energy as well as recycled materials. This is the worlds first zero carbon mineral surface.





THE WORLD'S FIRST
ZERO CARBON
WORKSURFACES

FEATURING
HYBRIQ+
TECHNOLOGY®

Uncompromisingly strong and beautifully sleek, these surfaces blend recycled materials with quartz combining them using 99% recycled water and pure electric energy from renewable sources. It's craftsmanship with a conscience.

Look out for the **Q+** symbol amongst the Silestone swatches

20% Minimum Recycled Glass

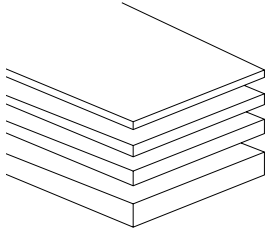
98% Recycled Water

100% Renewable Energy

THE FINER DETAILS

Because we believe that no detail should ever be left unturned, and because the smallest of finishing touches can have the greatest of impacts. For further options, speak to your worksurface retailer.

THICKNESS STYLE

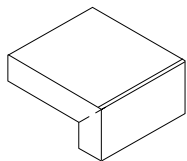


20mm or 30mm might be the go-to thickness for worksurfaces but these are just conversation starters. Where you choose to take your worksurface is entirely your choice...

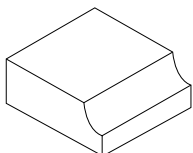


EDGE STYLE

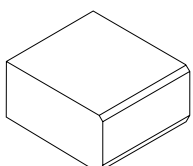
Modern



Classic

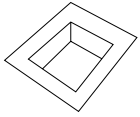


Traditional



SINK STYLE

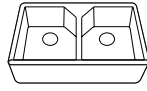
Integrated



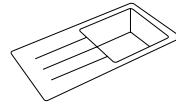
Undermount



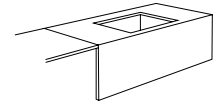
Ceramic



Lay-On

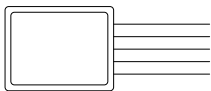


Feature Downstand Sink

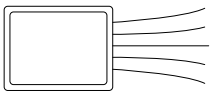


DRAINER STYLE

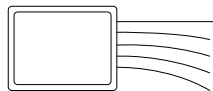
Standard



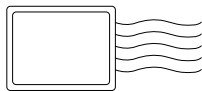
Flared



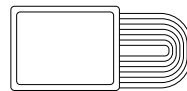
Taper



Wave



Track

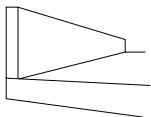


Recessed

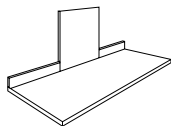


CLADDING STYLE

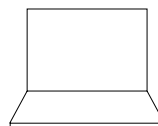
Uprand



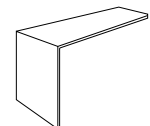
Hob/Range Backsplash



Full Backsplash



Downstand



MATERIAL FINISH



LEATHER FINISH

Matte and buttery soft akin to natural leather, though it will vary slightly depending onto which worksurface material it's applied.



RAW FINISH

A natural look with a rough, textured feel, this is a finish that convincingly replicates stone and industrial surfaces like poured concrete.



SMOOTH/SILK FINISH

Available on our Ultra Compact materials. This finish is a happy middle ground between matte and highly polished.



POLISHED FINISH

As the name suggests, this finish is all about high shine. It will also intensify the colour and clarity of your worksurface.



SUEDE FINISH

Another matte option but with a softer, more velvety texture, this finish also offers a high-quality consistent colour.



VOLCANO FINISH

Think of lava's rustic appearance and touch, and imagine that on your worksurface. A smooth surface with subtle undulations.



CARESS FINISH

In a textured worksurface that isn't one smooth level, Caress accentuates and celebrates those rises and falls, adding final polish to its high points.



TEXTURED FINISH

An etched, patterned finish that adds depth and impact, particularly on solid coloured worksurfaces.

MATERIAL TECHNOLOGY



N-BOOST TECHNOLOGY

Your worksurface's DNA has been boosted to make it easier than ever to maintain and clean. This performance trait offers outstanding resistance to stains, extraordinary shine and helps lock in colour intensity.

ULTRA-COMPACT CONSTRUCTION

Suiting worksurfaces for any room of your home, including outdoors thanks to its high resistance to UV light.

FULL STAVE CONSTRUCTION

Applicable to our timber worksurfaces where the wood runs the full length to avoid any visible joints.

END GRAIN

Popular on chopping boards and butcher's blocks, this is when the wood is cut across its growth rings, resulting in a striking, multi-layered surface full of variation.

HEAT PROOF TO 300°

Withstanding high temperatures without burning, cracking or scorching, these worksurfaces allow for hot pans to be placed directly onto them without ever fearing damage.

FINGER STAVE CONSTRUCTION

A wooden treatment where the joints are visible, finger staving features short, thin staves of wood bonded together by glue.

HYBRIQ+

Silestone Hybriq+ by Cosentino ZERO CARBON hybrid mineral surfaces manufactured using 100% renewable energy, 98% recycled water & 20% minimum recycled glass, with the added bonus of reduced percentage of crystalline silica maximum 50%.





SPECIALISTS FROM START TO FINISH

History and reputation

Materials, details and finishing touches alone do not make an everlasting worksurface. It takes a team of experts in their field to bring together all the elements and bind them into a masterpiece that you'll be able to love and use day in day out for a lifetime. Based here in the UK, we've been masters in worksurface design, making and fitting for decades. And it's because of our history and reputation that we've been able to build a material supply network from the world's most esteemed sources, to guarantee you a surface that's remarkably high quality in every regard.







PRECISION TEMPLATING

Your worksurface is designed to your exacting requirements, and that applies to its made-to-measure sizing too. One of our templating experts will visit your home to digitally map and measure your dimensions to promise millimetre perfection.

BESPOKE MANUFACTURING

When worksurfaces are authentically made, it's somewhat of an art - one we're proud to have honed and mastered. Every one of our worksurfaces is handmade to order with our sculptors pouring over every last detail that you've personally chosen.

SPECIALIST INSTALLATION

Your worksurface will only ever be delivered and fitted by one of our accredited installers. They'll also guide you on how to clean and care for it before leaving your home.

PREMIUM AFTERCARE

From the moment your worksurface is installed, we guarantee you, as the registered owner, for manufacturing defects up to a decade. This way, you know that our care and support is always at your side, just as your worksurface will be for year, after year, after year.



QUICK REFERENCE KEY

LEAVE OPEN, OR USE AS A BOOKMARK



LEATHER FINISH



SUEDE FINISH



RAW FINISH



VOLCANO FINISH



SMOOTH/SILK FINISH



CARESS FINISH



POLISHED FINISH



TEXTURED FINISH



N-BOOST TECHNOLOGY



HEAT PROOF TO 300°



ULTRA-COMPACT CONSTRUCTION



FINGER STAVE CONSTRUCTION



FULL STAVE CONSTRUCTION



END GRAIN



HYBRIQ +



HYBRIQ

OPEN TO REVEAL OUR
QUICK REFERENCE KEY

BROUGHT TO YOU BY



Summer 2022



This publication is printed on materials from well-managed forests and is a paper for which the production and distribution has been carbon balanced by The World Land Trust.

